



# GBHS Newsletter

February  
2012

## Notes from the Principal

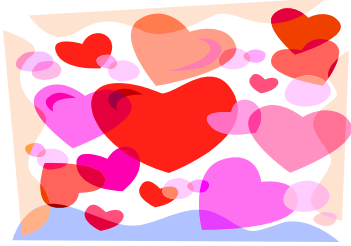
Dear Parents,

Since February is the shortest month of the year, I will try and make this the shortest letter of the year! It may be the shortest month by days, but, it is as full of school activities for you as a parent to interact with our students as any other month. February brings National FBLA week, the Perfect Panther contest, Madrigal singing Valentines, State competitions in Scholar's Bowl, Swimming, Piano, Wrestling, and the KMEA Honor Band/Choir/Orchestra. We also have the GBHS Hall of Fame inductions, which this year includes our long-time Principal Don Halbower.

Of course, Basketball, Bowling, Swimming and Wrestling are going strong to the finish. Come join us for any or all of these activities that show the best that GBHS has to offer. Also, please plan on joining us for Parent/Teacher conferences on Feb. 13<sup>th</sup> and Feb. 14<sup>th</sup> from 5-8 p.m. and on Feb. 16<sup>th</sup> from 12:30-3:30 p.m. Come and visit with your son/daughter's teachers, counselors and administrators about their present classes, next years classes, and any other issue that is on your mind. We look forward to seeing you at the conferences.

Sincerely,

Tim Friess



## Singing Valentines

**On Tuesday February 14th, 2012 the Madrigal-Pops Singers will be delivering Singing Valentines from 7:30am- 3:30pm.**

For a donation of \$25.00 the recipient will be serenaded with their choice of a love song or a song more appropriate for friends or work place relationships etc... and will also receive a decorated cookie.

**Please call 620-793-1521 and ASK FOR EXTENSION 138** to schedule the time and location of your singing valentine. You may request a specific group to deliver the telegram and they will receive the profit from the telegram. As much as possible, all requested times of delivery will be honored. It is most helpful to give a 'time frame' instead of a specific time. Also designating a time that WILL NOT work is helpful in scheduling.

**Please place all orders by Thursday February 9th at 3:00pm. Payment is requested no later than Friday, February 10<sup>th</sup> and may be made in person or by mailing to GBHS ATTN SUSAN STAMBAUGH 2027 Morton . Please make checks payable to GBHS Madrigal Pops Singers.**

You may also return this form to GBHS (attn. Stambaugh) 2027 Morton, with your payment, specifying times, Recipient and Sender, Address etc.. or else call the above number with the same information. If you return the form, you will be called with a confirmation of the time etc... if you return this form and DO NOT receive a confirmation call, please call the 793-1521 ext. 138 number to verify receipt.

If you call in to order, you will also receive an assigned time if you request to be notified. Again, all requested times will be honored, as much as possible, first come, first serve.

Please detach and return :

\_\_\_\_\_ detach and return \_\_\_\_\_

NAME OF SENDER: \_\_\_\_\_

SENDER ADDRESS: \_\_\_\_\_

SENDER PHONE: \_\_\_\_\_

RECIPIENT OF TELEGRAM: \_\_\_\_\_

ADDRESS TO DELIVER TO RECIPIENT: \_\_\_\_\_

BEST TIME TO DELIVER TO RECIPIENT: \_\_\_\_\_ -

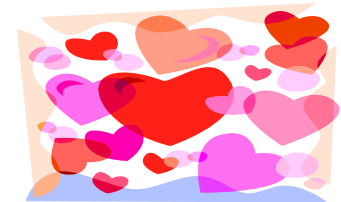
TIME THAT WILL ABSOLUTELY NOT WORK TO DELIVER TO RECIPIENT: \_\_\_\_\_ (IF ANY)

PHONE NUMBER TO CALL IN CASE OF DIFFICULTY IN DELIVERY:

MESSAGE TO RECIPIENT (FROM, 'WITH LOVE' ETC) \_\_\_\_\_

Choice of Group : (please name a Madrigal student and we will send their group to perform for you. If you do not indicate a group, we will choose one for you.) .

\_\_\_\_\_



# Yearbook

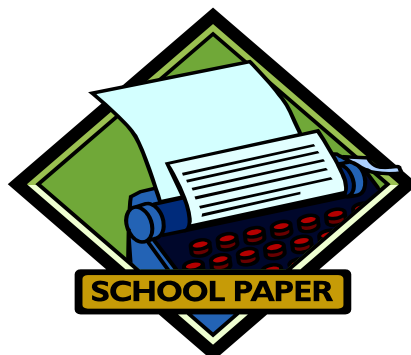
Have you bought your son's/daughter's 2011-2012 yearbook yet? If not, it is not too late! Yearbook order forms can be found in the main office or in room 100. Contact Mrs. Basden at [rachel.basden@usd428.net](mailto:rachel.basden@usd428.net), if you have any questions.

# Panther Tales

Cyber bullying. . .an issue that's difficult to deal with, but one with which many of our young people are dealing, all too often. This month's Panther Tales GBHS Newspaper tackles this very issue, from identifying what cyber bullying is, to the severity of the problem and its consequences, to ways to deal with it.

I hope that you and your child will read this issue together and that it would spur discussions about properly dealing with cyber bullying situations. Go to [www.greatbendhighpanthers.net](http://www.greatbendhighpanthers.net) and click on the Panther Tales link.

Enjoy reading our January issue. I hope it helps, in some small way, to stop cyber bullying.





## **Panther Enrichment Program (PEP)**

Are you in danger of failing any of your classes? Would you like some help? In the library there will be teachers who want to help you pass your classes ready to tutor you. **Panther Enrichment Program (PEP)** will be in the library everyday from 7:30 – 8:00 and 3:15 – 4:15 except Friday. This is for any student who needs any help in any class. This is a FREE tutoring session for you, all you have to do is bring your assignments or book and come to the Library.

## **Sale**

Check out the USD 428 Surplus Property that we have for sale. The property pictures and pricing are located on the school webpage - [www.usd428.net](http://www.usd428.net) . USD 428 Surplus Property icon is on the left side of the screen.

# News from the Guidance Office – February 2012

## ACT Information

### GBHS Code 171-158

Test                      Registration

Date                      Deadline

04/14/11 03/09/11

## Dates to remember

Feb. 11 – ACT

Feb. 12 – College Goal Sunday

Feb. 15 – Washburn Univ. FAFSA deadline

**Feb. 13 – GBHS Conferences – Commons area – 5-8 p.m.**

**Feb. 14 – GBHS Conferences – Commons area – 5-8 p.m.**

**Feb. 16 – GBHS Conferences – 12:30 – 3:30**

Mar. 01 – KSU & KU FAFSA deadline

Mar. 02 – GBHS Local scholarships deadline (due to the Guidance office)

Mar. 15 – BCC priority scholarship deadline

## Web Resources

Scholarship searches

[www.scholarshiphelp.org](http://www.scholarshiphelp.org)

[www.fastweb.com](http://www.fastweb.com)

[www.cashe.com](http://www.cashe.com)

[www.collegenet.com](http://www.collegenet.com)

[www.asla-scholarships.org](http://www.asla-scholarships.org)

[www.collegeedge.com](http://www.collegeedge.com)

[www.finaid.com](http://www.finaid.com)

[www.gocollege.com](http://www.gocollege.com)

College & Career Planning

[www.anycollege.net](http://www.anycollege.net)

[www.usnews.com](http://www.usnews.com)

[www.occ.com](http://www.occ.com)

[www.supercollege.com](http://www.supercollege.com)

[www.theigroup.com](http://www.theigroup.com)

[www.careerpath.com](http://www.careerpath.com)

[www.allaboutcollege.com](http://www.allaboutcollege.com)

<http://onlineonetcenter.org>

[www.carpedm.com](http://www.carpedm.com)

Financial Aid

[www.fafsa.ed.gov](http://www.fafsa.ed.gov)

[www.financialaidforcollege.com](http://www.financialaidforcollege.com)

[www.fastaid.com](http://www.fastaid.com)

[www.pin.ed.gov](http://www.pin.ed.gov)

[www.savingforcollege.com](http://www.savingforcollege.com)

[www.supercollege.com](http://www.supercollege.com)

[www.finaid.com](http://www.finaid.com)

[www.wiredscholar.com](http://www.wiredscholar.com)

[www.college.gov](http://www.college.gov) is a new website developed by students, for students, and about students, featuring personal accounts of students who overcame challenges to going to college such as peer pressure, lack of family support, and financial barriers.

### College Goal Sunday

College Goal Sunday, an afternoon of free financial aid advice for high school seniors and parents, will be held at Great Bend High School in Great Bend, 2027 Morton, from 2-4 p.m., Sunday, Feb. 12, 2012. Students and parents should take their 2011 tax return and W-2 forms to complete the FAFSA. At each of the 19 College Goal Sunday locations, students could win a \$500 scholarship that may be used at any college or vocational school in Kansas. Check out [www.collegegoal.org](http://www.collegegoal.org) to register and see the list of items they want you to bring.

### LOCAL GBHS SCHOLARSHIPS –

The GBHS local scholarships can be found on the USD 428 website at [www.usd428.net](http://www.usd428.net). Seniors will be expected to go online and print off the applications in which they qualify. They will fill them out accordingly and then turn them in **with letters of recommendation** to the guidance office BY FRIDAY, **MARCH 2nd, 2012**. We will give the students a typed page of instructions that they should follow. If you have any questions, please contact the guidance office and your child's counselor by their last name— **Mrs. Baker (A-G), Mrs. Davis (H-O) and Mrs. Koelsch (P-Z)**.

### Recommendation Letter

If you need a recommendation letter for any scholarship, please follow these simple rules:

1. Ask EARLY.....give plenty of time for them to write a great recommendation.
2. Give a deadline when you need it returned to you or mailed in.
3. Give them a stamped addressed envelope if it is to be mailed in or an envelope they can seal it in.
4. Give them a copy of your resume so they know your activities.
5. Write them a thank you later.....it takes time to write a great recommendation.

### GBHS Enrollment

On January 30<sup>th</sup> GBHS students will begin entering course requests for the 2012/2013 school year. Parents will be able to review requests on their student's access online and make any changes with their child. **During parent/teacher conferences in February**, parents will be able to meet with teachers to discuss recommendations and view student schedule requests in a computer lab. In addition, junior and senior parents have the opportunity to meet with counselors to discuss post-secondary planning and options and sophomore parents will be able to discuss the results of the PLAN and PSAT tests.

**FAFSA4Caster** is a new financial aid estimator designed to help students and their families plan for college. It provides an early estimate of eligibility for federal financial aid. Check out this new E-tool at [www.FederalStudentAid.ed.gov](http://www.FederalStudentAid.ed.gov)

### **Upcoming College Events and Scholarships**

#### Fort Hays State University

Mar. 1 FAFSA priority date

#### Kansas State University

Mar. 1 FAFSA priority date

**Junior Days** will be held on March 30<sup>th</sup>, April 2<sup>nd</sup>, 16<sup>th</sup> and May 4<sup>th</sup> – Pick a day to explore majors and careers, tour campus, eat lunch and more!  
Register at: <http://consider.k-state.edu/openhouse/>

**ACT Workshop** for sophomores and juniors will be held on Saturday, March 31st. This workshop is designed to give students all they need to know about doing their best on the test. Register at [www.k-state.edu/admissions/act](http://www.k-state.edu/admissions/act) before **March 23<sup>rd</sup>**. **Cost is \$20.**

### **Golden Belt Community Foundation Scholarship requirements**

- Full-time undergraduate
- 3.0 GPA
- Demonstrate good moral character, community service and extra-curricular activities

Access application at [www.goldenbeltcf.org](http://www.goldenbeltcf.org) and submit before February 28th.

### **University of Kansas**

Mar. 1 FAFSA priority date

Hixson Opportunity Award requirements

- Financial need and/or personal hardships

Apply at [www.scholarships.ku.edu/hixson.shtml](http://www.scholarships.ku.edu/hixson.shtml) before **February 1st**.

### **Bethany College**

Mar. 15 FAFSA priority date

Full-tuition Award requirements

- 3.5 GPA
- 25 ACT composite or be in top 25% of graduating class

Write an essay and interview with faculty

### **Emporia State University**

Feb. 15 Priority Scholarship Deadline

### **Pittsburg State University**

Feb. 1 Scholarship deadline

Honors College Scholarship requirements

- 3.5 GPA
- 28 ACT
- Leadership positions in school and community

Apply at [www.pittstate.edu/admin/vpaa/honorscollege.html](http://www.pittstate.edu/admin/vpaa/honorscollege.html) before **February 1<sup>st</sup>**.

### **Barton County Community College**

Feb. 25 SENIOR DAY – February 25th; 2:00 – 5:30; learn valuable information about admissions, financial aid, student life and housing. There will be tours with faculty members on hand for questions. TWO \$500 scholarships will be given away to those that attend. Students and parents will receive free general admission tickets and vouchers to concessions for the homecoming basketball games that evening. Sign up can be found at [www.bartonccc.edu/prospective](http://www.bartonccc.edu/prospective) or by calling 792-9286 (Admissions). Students will receive help in filling out the admissions application so they can receive the academic scholarship for which the deadline is March 15th.

Mar.15 Scholarship deadline

Apr. 15 FAFSA priority date

### **Colby Community College**

Mar. 15 Veterinary Technology program application deadline

### **Johnson County Community College**

Apr. 1 Scholarship deadline

**Kansas Wesleyan** offers MANY scholarships including a **free residence hall room for KS residents who have a 2.5 GPA and an ACT score of 18.** High school seniors that have a 3.75 GPA and a 25 ACT qualify for a \$10,000 Presidential Scholar scholarship. Check it out at [www.kwu.edu/enrollment/scholarships](http://www.kwu.edu/enrollment/scholarships)

**Kansas Independent Colleges and Universities website:** [www.kscolleges.org](http://www.kscolleges.org)

This is a GREAT website for access to the guide book to check out college visit dates and financial aid information for the independent colleges in KS.

## SCHOLARSHIP INFORMATION

### **Vocational Educational Scholarship Program**

The Vocational Scholarship is available to eligible students enrolled in approved vocational programs at community or technical colleges and some two-year programs at four-year institutions. Applicants must take the vocational exam which is offered at various sites throughout the state on the first Saturday in March. **Postmark deadline is Feb. 3, 2012. There are approximately 250 scholarships of \$500.00 each awarded to the applicants with the highest scores. Approximately 1 in 2 applicants is funded.**

**American Legion Scholarships** - see your high school counselor or local American Legion for applications and requirements for the scholarships below:

Music Committee– Due Feb. 15

Shooting Sports – Due Feb. 15

Hobble (LPN) Nursing – Due Feb. 15

Eagle Scout of the Year – Due. Feb. 15

Hugh A. Smith – Due Feb. 15

Ted and Nora Anderson – Due Feb. 15

Albert M. Lappin – Due Feb. 15

Rosedale Post 346 – Due Feb. 15

Charles W & Annette Hill – Due Feb. 15

U.S. Udie Grant - Due Feb. 15

Dr. Click Cowger Baseball – Due. July 15

American Legion Baseball – Due July 15

Paul Flaherty Athletic – Due July 15

### **FFA-Ford Truck Scholarships**

Marmie Ford has partnered with Ford Trucks and the National FFA Foundation to provide a total of 1000 scholarships. FFA High school seniors must apply online at [www.ffa.org](http://www.ffa.org) and complete a signature page signed by the local Ford dealer. The online application must be submitted by Feb. 15th and the signature page postmarked by Feb. 22nd. Go to the website for more information.

### **Best Buy Scholarship**

Best Buy offers scholarships to students who have made extraordinary volunteer contributions to their communities. Selection of recipients will be based on solid academic performance and exemplary community service or work experience. Consideration may also

be given to participation and leadership in school activities. Financial need is not considered. Access the online application at [www.bestbuy-communityrelations.com](http://www.bestbuy-communityrelations.com). Application deadline is **February 15<sup>th</sup>**.

- Be students currently in grades 9-12 living in the United States or Puerto Rico,
- Have a minimum cumulative high school grade point average of 2.5 (on a 4.0 scale), or equivalent,
- Demonstrate commitment to and involvement in volunteer community service or work experience, and

Following high school graduation, plan to enter a full-time undergraduate course of study at an accredited two- or four-year college, university, or vocational-technical school in the United States or Puerto Rico. Applicants who are current high school seniors must enroll no later than fall 2009. Applicants who are in grades 9-11 must plan to enroll no later than the fall term following high school graduation.

#### **GAR College Scholarship**

5 high school seniors will receive college scholarships of \$12,500 per year to attend any accredited 4 year college full time. They must show high academic achievement; have financial need; and **have a parent/guardian working in the financial services industry (banks, etc.)**.

Postmark deadline is Feb. 10<sup>th</sup>. [www.gordonrich.org](http://www.gordonrich.org)

#### **Lang Diesel Inc (LDI) Service Technician Scholarship & Tuition Reimbursement**

LDI selects multiple students to receive a \$4000 award that are enrolled in a diesel mechanics program at a vocational school. LDI will also select those who have already graduation from a diesel mechanics program and will reimburse them for some of their tuition if they are employed with LDI. If a student is interested in this program, contact the Hays location at 785-735-2651.

#### **Kansas ESOL/Bilingual Education Scholarship**

Applications are available in the guidance office and must be submitted before **March 15<sup>th</sup>**.

- Individual must have been in a bilingual or English for Speakers of Other Languages Program during high school
- Financial need
- 2 letters of recommendation

Letter of acceptance from post-secondary institution

#### **Ryan Dunlap Memorial Scholarship**

Access applications at [www.goldenbeltcf.org](http://www.goldenbeltcf.org) and submit before **March 30<sup>th</sup>**.

- Attend Barton Community College
- Major in education and/or sports medicine
- 3.0 GPA

Financial need

#### **Allan V. Miller Scholarship**

Access applications at [www.goldenbeltcf.org](http://www.goldenbeltcf.org) and submit before **March 30<sup>th</sup>**. Scholarship money may be used at any Kansas technical school, community college or university.

- GBHS or EHS graduate
- Current or past FFA member

Major in agriculture field

**Asthma and Allergy Foundation of America - Berri Mitchell College Scholarship** Seniors, if you suffer from **asthma or allergies** and need money for college, go to [www.aafakc.org](http://www.aafakc.org) to complete the scholarship application. **Deadline is March 1<sup>st</sup>.**

**Senator Robert J. Dole Public Service Scholarship Program**

\$1,000 scholarships (up to 128 will be awarded this year)

\*3.0 grade point average

\*significant amount of volunteer community/public service projects

\*2012 high school graduate

\* 32 ACT score

\*enroll for fall 2012 at a KS Regents University or Washburn University

Visit [www.sms.scholarshipamerica.org/senatordolepublicservice](http://www.sms.scholarshipamerica.org/senatordolepublicservice) in JANUARY for application.

Deadline for submission is **early March, 2011.**

**Golden Belt Community Foundation – John Mingenback Memorial Scholarship**

Criteria: Barton County, KS residents, future or current full time undergraduate or graduate student at a university, community college, or tech school, majoring in a health/medical related field, with preference given to Kansas schools. Minimum cumulative GPA 3.0. **Deadline is March 30<sup>th</sup>.**

[www.goldenbeltcf.org](http://www.goldenbeltcf.org)

**Barton County Farm Bureau Assoc. Scholarship**

Applicant must be a high school senior whose parents/legal guardians are current Barton County Farm Bureau members. There will be 4 scholarships given for \$500 each. Student must have a GPA of 2.5 or higher. See your counselor for an application. They are **due to the Farm Bureau office April 15.**